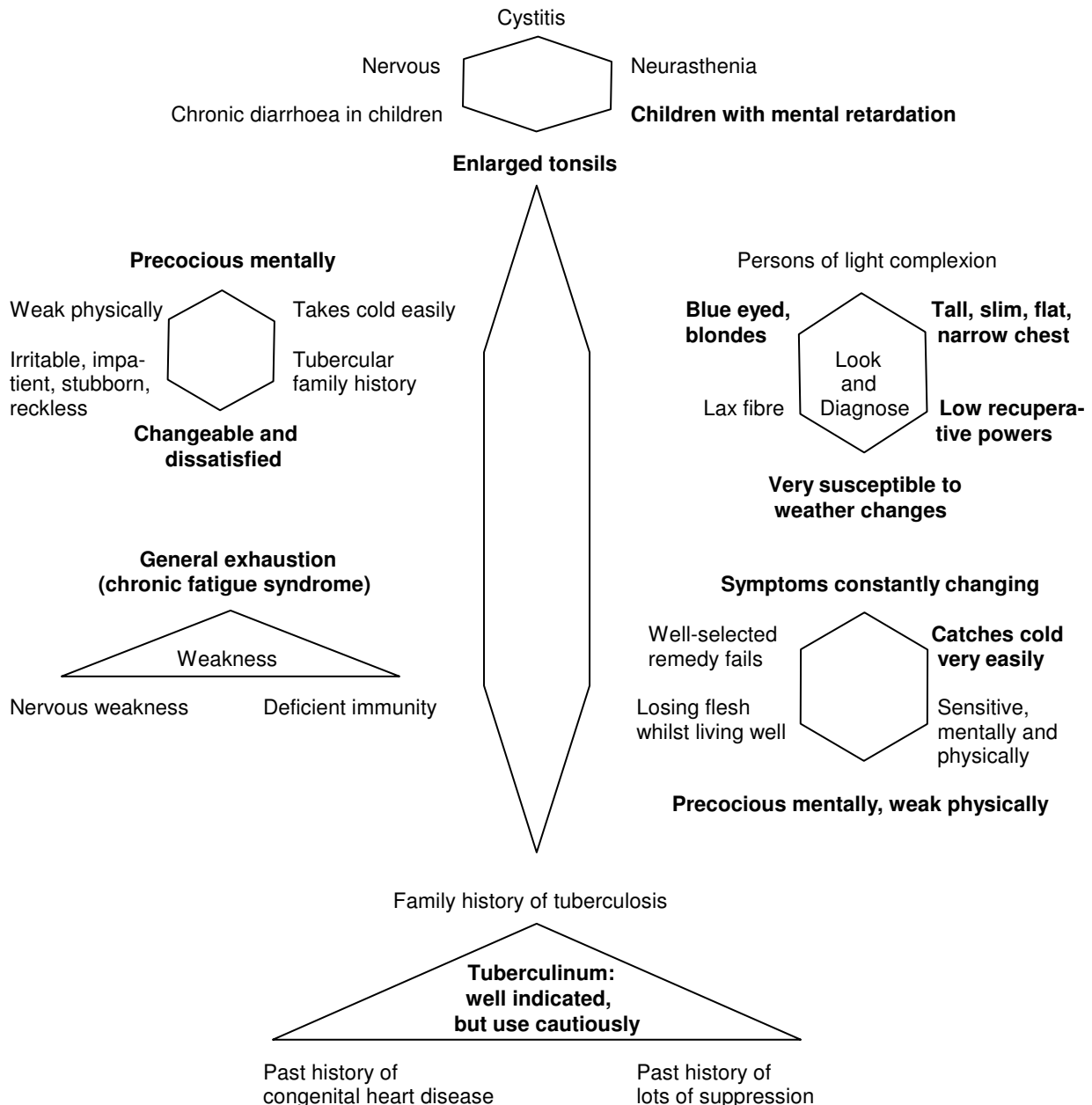




{ [HYPERLINK "http://www.homoeopathy-course.com/SWF\\_/TUBERCULINUM.html"](http://www.homoeopathy-course.com/SWF_/TUBERCULINUM.html) }  
 ( Click above link for Picturised Presentation )

## TUBERCULINUM

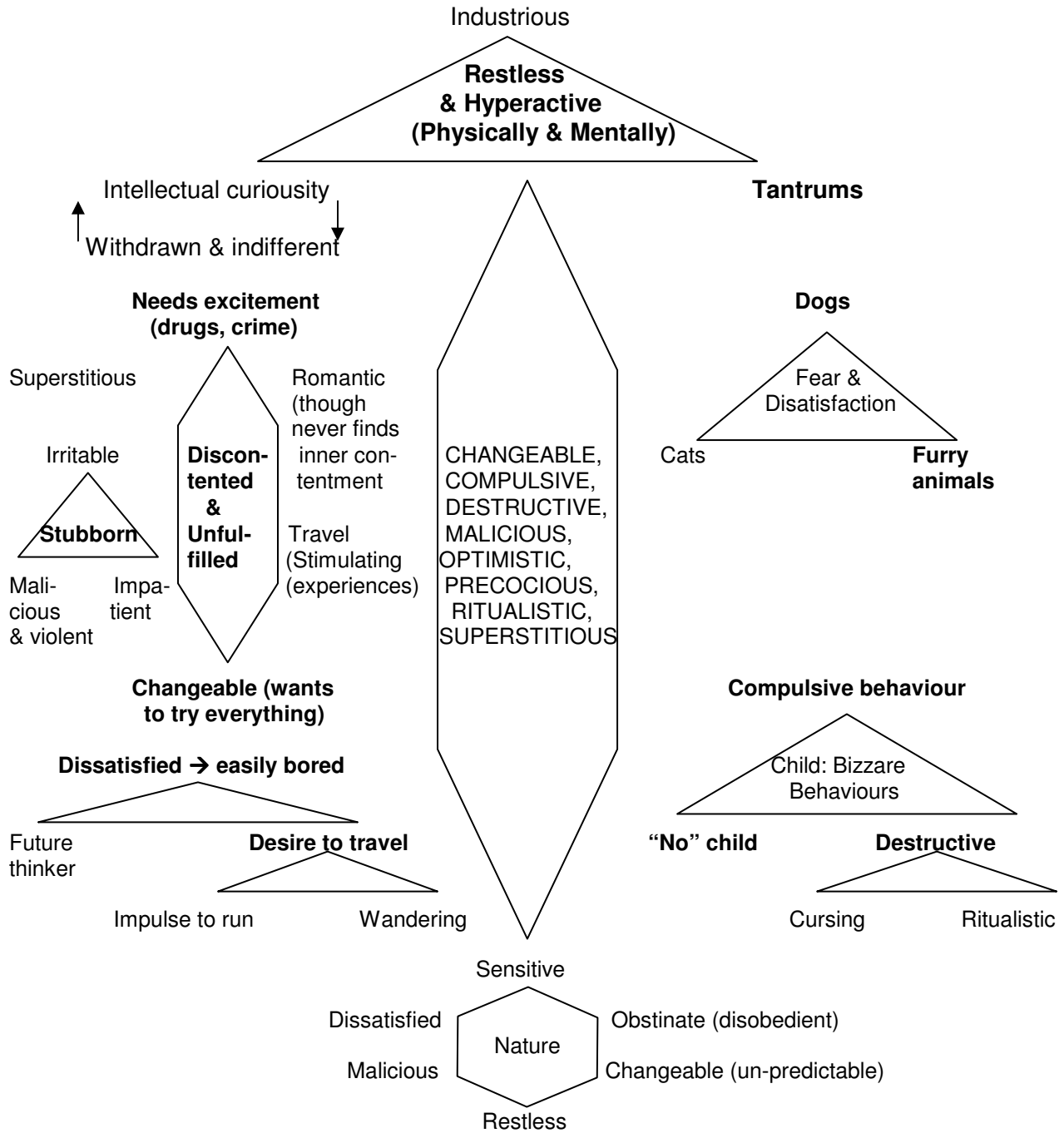
### A. PHYSICAL THEME



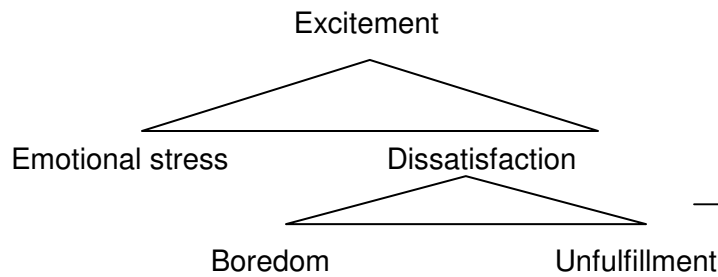
### Physical Clinicals:

1. Chronic Recurrent Tonsillitis;
2. Chronic Asthma;
3. Chronic Renal conditions;
4. Recurrent Chest Infections;
5. Recurrent skin conditions including recurrent pimples;
6. Chronic Enuresis including worm infestations;
7. Chronic Gastritis.

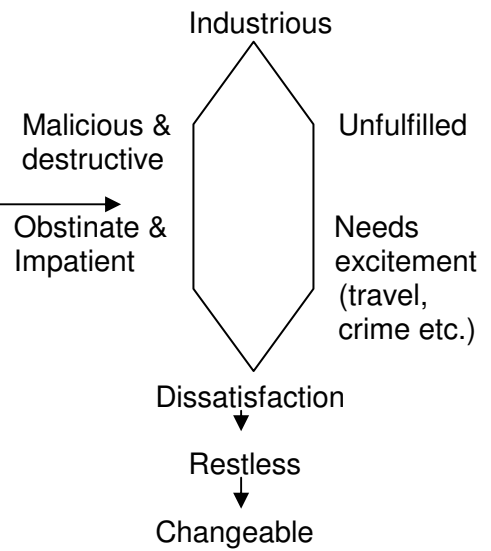
**B. MENTAL ESSENCE**



## MENTAL AETIOLOGIES



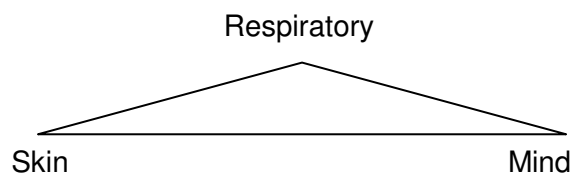
## PSYCHIC MANIFESTATIONS



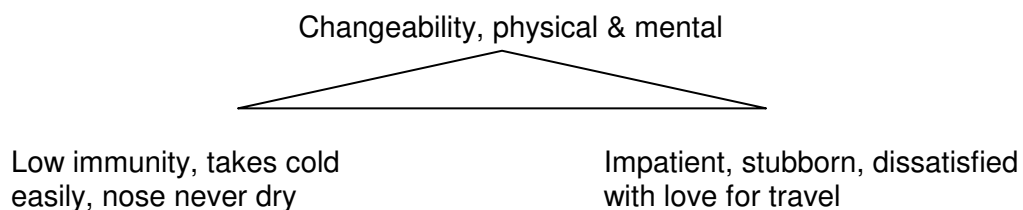
### **Mental Clinicals:**

1. Hyperactive Restlessness (ADHD) and Autism;
2. Temper Tantrums;
3. Depression;
4. Changeable and destructive mentality;
5. Anger episodes;
6. Obsessive Compulsive Disorders (O.C.D);

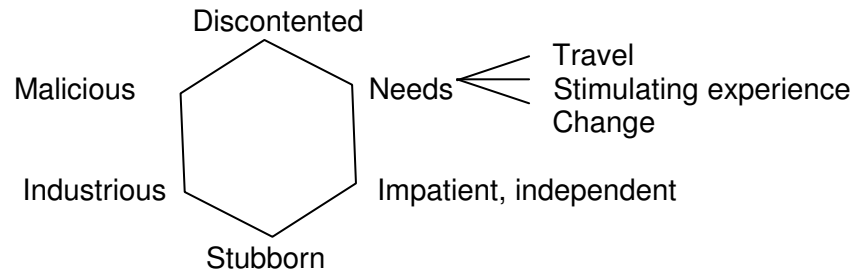
### **C. SPHERE OF ACTION: WEAKEST LINKS**



### **D. CATCH WORDS: KEYNOTES**



## E. **KEYWORDS FOR PERSONALITY PROFILE**



## F. **POTENCY OF CHOICE**

- i) Mental : 1M, 10M.
- ii) Respiratory : 30C, 1M.
- iii) Renal : 200C.
- iv) Skin : 200C, 1M.
- v) Enuresis: 1M (ref. Dr. Boericke in Calc. Carb. chapter).
- vi) Rheumatism : 200C.
- vii) Gastro-intestinal : 1M.
- viii) N.B.W.S. : 1M, 10M.

### *Chronic medicine.*

## G. **MIASMATICS OF TUBERCULINUM**

Psora +++, Sycosis +++, Syphilis ++, Tubercular +++.

## H. **CLINICAL TIPS**

Recurrent upper respiratory tract infections, cystitis, infections resulting chronic debility: when well selected medicines fails in a chilly constitutions who craves fresh air.

{ [HYPERLINK "http://www.homoeopathy-course.com/SWF\\_/TUBERCULINUM.html"](http://www.homoeopathy-course.com/SWF_/TUBERCULINUM.html) }  
( Click above link for Picturised Presentation )