

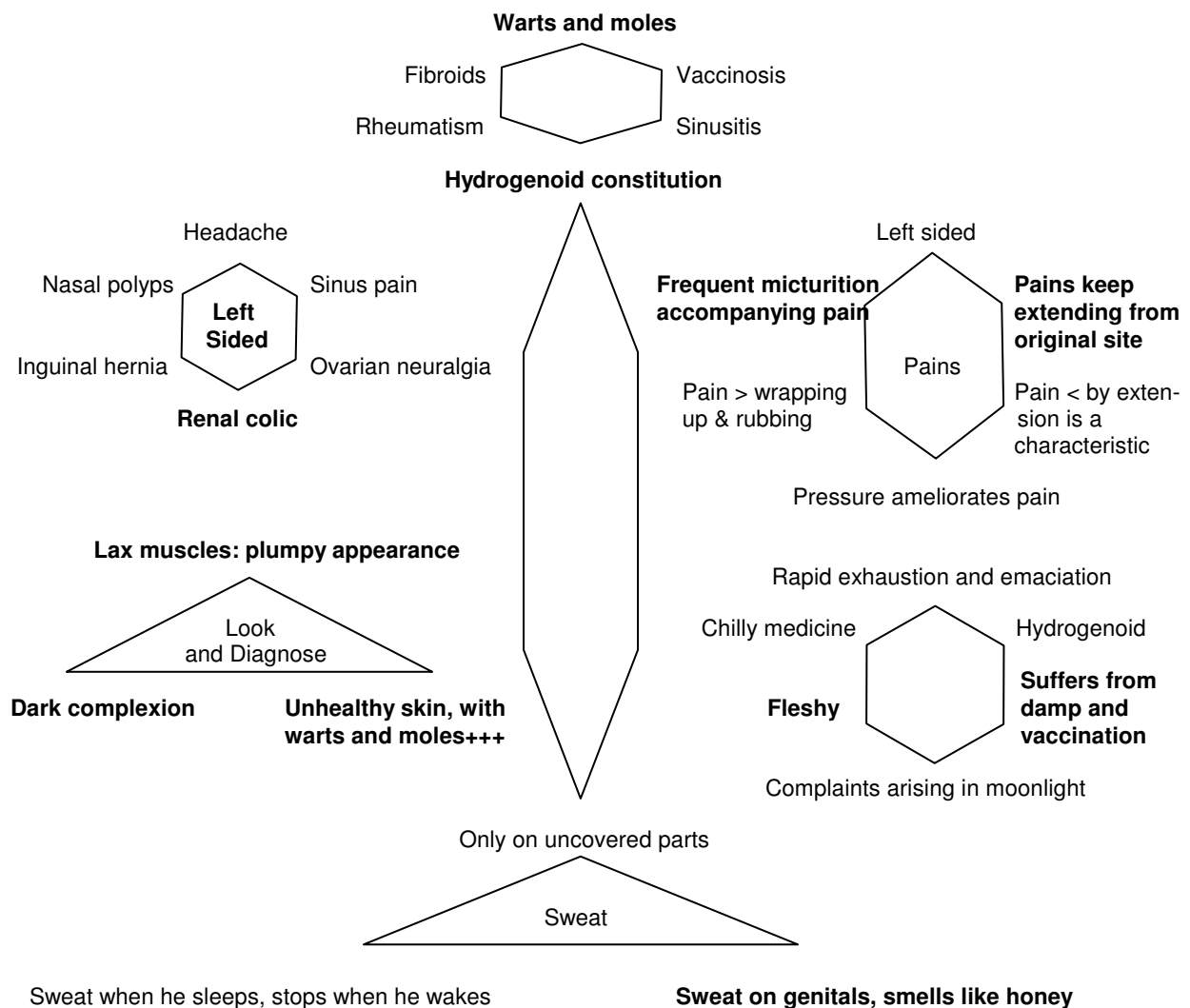


# ALLEN COLLEGE OF HOMOEOPATHY

{ [HYPERLINK "http://www.homoeopathy-course.com/SWF\\_/THUJA.html"](http://www.homoeopathy-course.com/SWF_/THUJA.html) }  
 ( Click above link for Picturised Presentation )

## THUJA

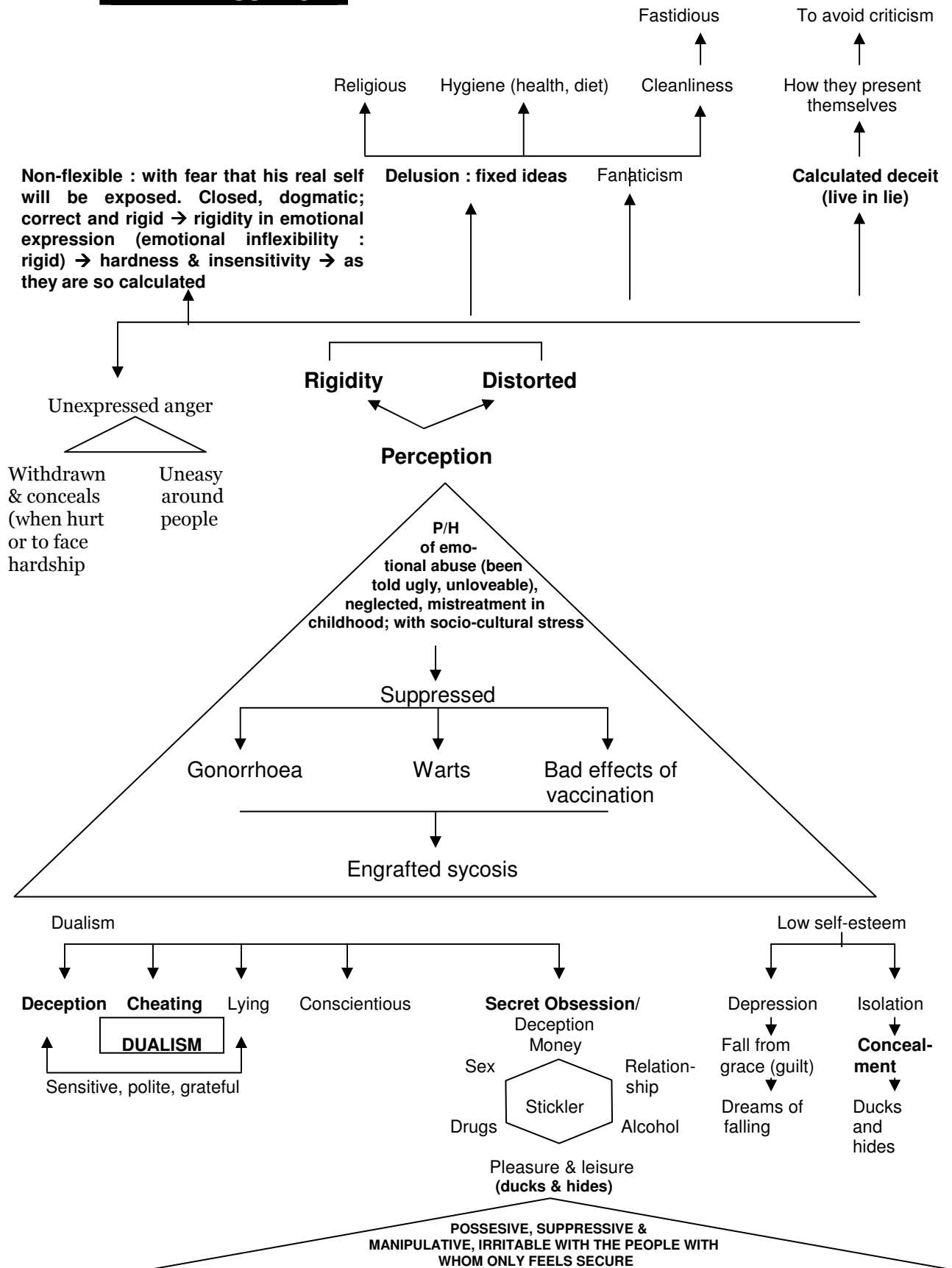
### A. PHYSICAL THEME



### Physical Clinicals:

1. Warts, condylomas; skin tags; naevi;
2. Tumours including adenomas; fibromas and fibro-myomas;
3. Urinary Tract Infections (U.T.I);
4. Chronic headaches;
5. Nasal Polyps;
6. Acute & Chronic Gastro-enteritis;
7. Osteo-arthritis.

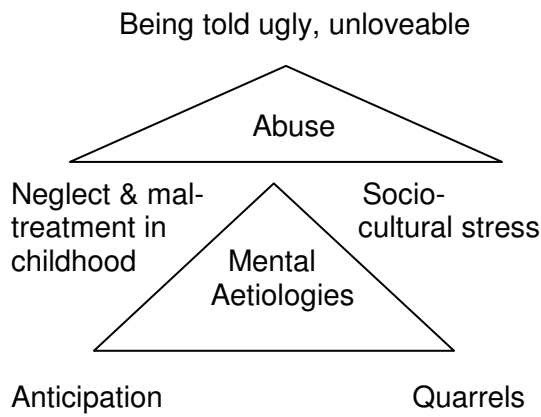
**B. MENTAL ESSENCE**



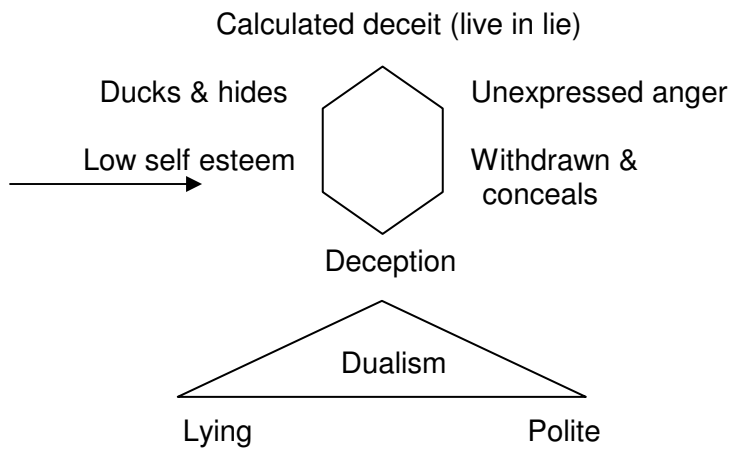
Guard; conceal. Natrum Muriaticum wall themselves off. Lycopodium and Silica will try to avoid things, but Thuja feels trapped and the best thing they can do is conceal themselves

Mistrust; distorted

**MENTAL AETIOLOGIES**



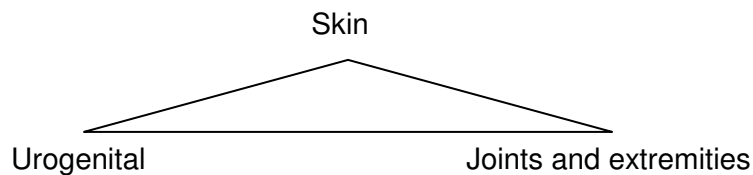
**PSYCHIC MANIFESTATIONS**



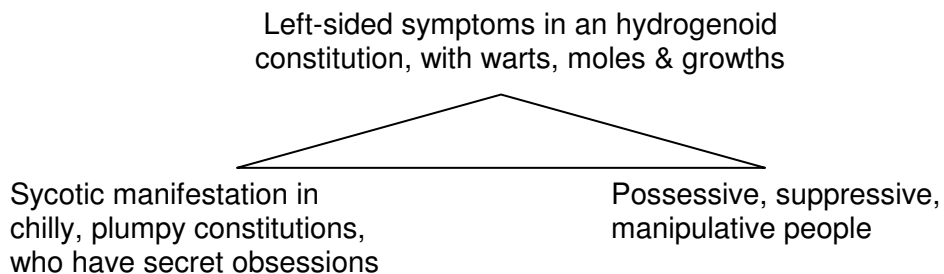
**Mental Clinicals:**

1. Anxiety Neurosis;
2. Fear Psychosis;
3. Delusion & Hallucination;
4. Obsessive Compulsive Disorders (O.C.D);
5. Manipulative behaviours.

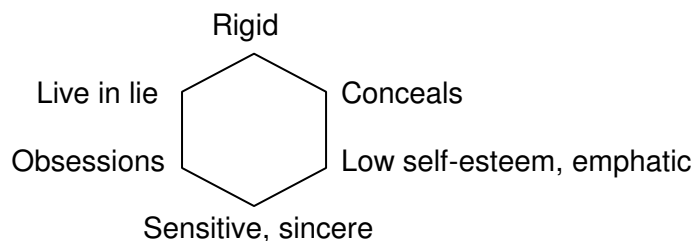
**C. SPHERE OF ACTION: WEAKEST LINKS**



**D. CATCH WORDS: KEYNOTES**



**E. KEYWORDS FOR PERSONALITY PROFILE**



**F. POTENCY OF CHOICE**

- i) Headache: 200 C.
- ii) Eyes : 30 C, 200 C.
- iii) Nose : 200 C, 1 M.
- iv) Abdomen : 200 C.
- v) Urinary : 200 C.
- vi) Rheumatism : 30 C.
- vii) Skin : 30 C.
- viii) Emotional : 1 M, 10 M.
- ix) Mental : 1M.

*Acute as well as Chronic medicine.*

**G. MIASMATICS OF THUJA**

Psora ++, Sycotic +++, Syphilis ++, Tubercular ++.

**H. CLINICAL TIPS**

Lax, plumpy, ganeshji appearance where the trunk represents extra growths, who suffers from osteo-arthritis which aggravates from damp;in deceitful people who have secret obsessions.

{ [HYPERLINK "http://www.homoeopathy-course.com/SWF\\_/THUJA.html"](http://www.homoeopathy-course.com/SWF_/THUJA.html) }  
( Click above link for Picturised Presentation )