

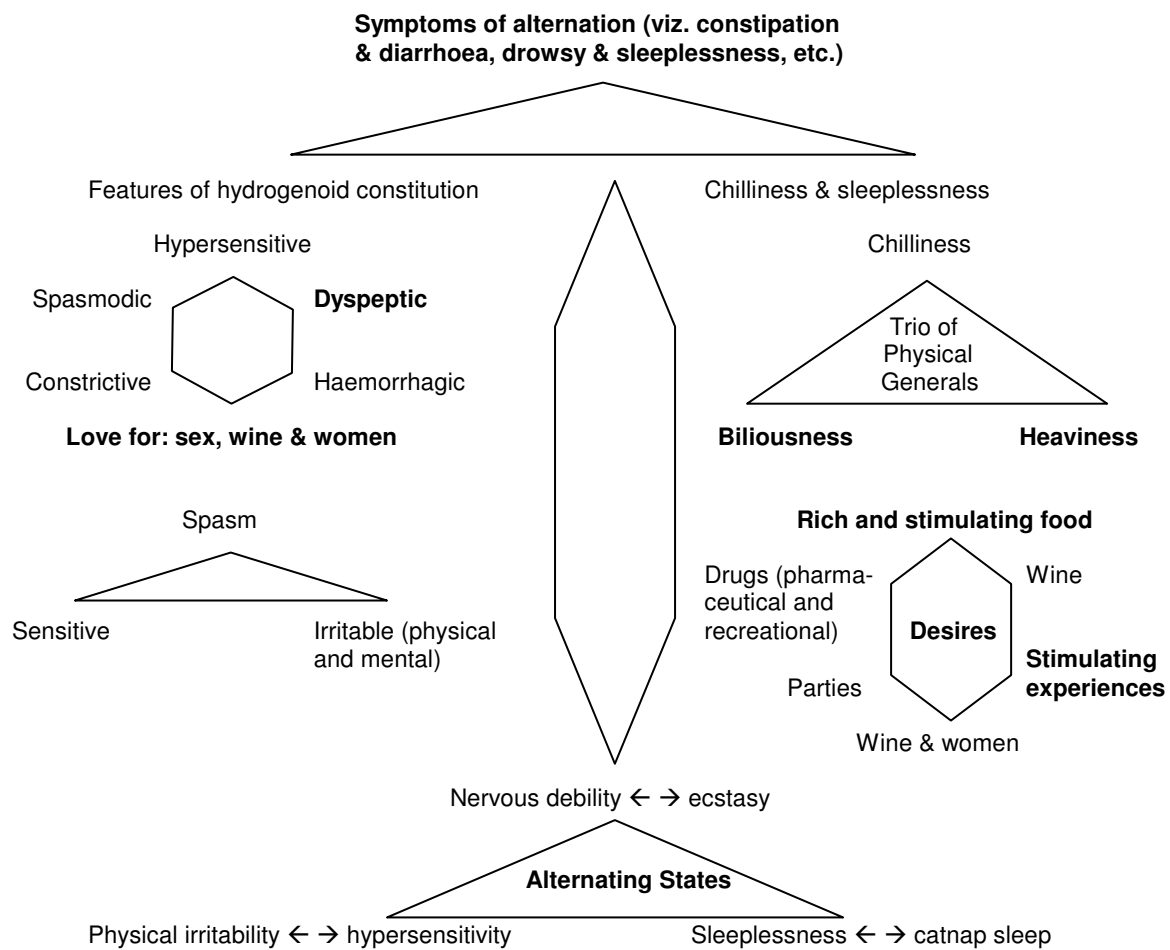


ALLEN COLLEGE OF HOMOEOPATHY

{ [HYPERLINK "http://www.homoeopathy-course.com/SWF_/NUX_VOMICA.html"](http://www.homoeopathy-course.com/SWF_/NUX_VOMICA.html) }
 (Click above link for Picturised Presentation)

NUX VOMICA

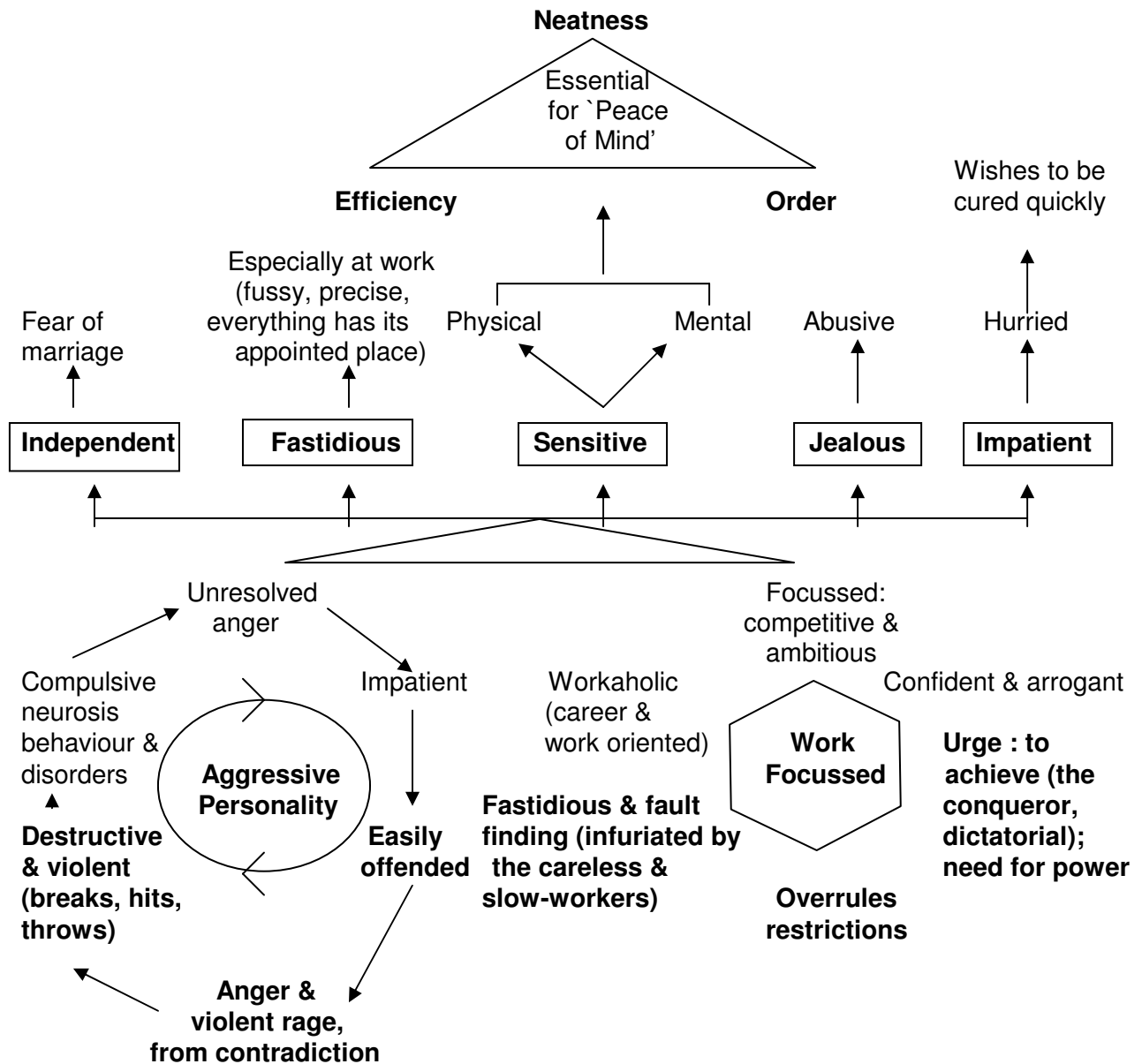
A. PHYSICAL THEME



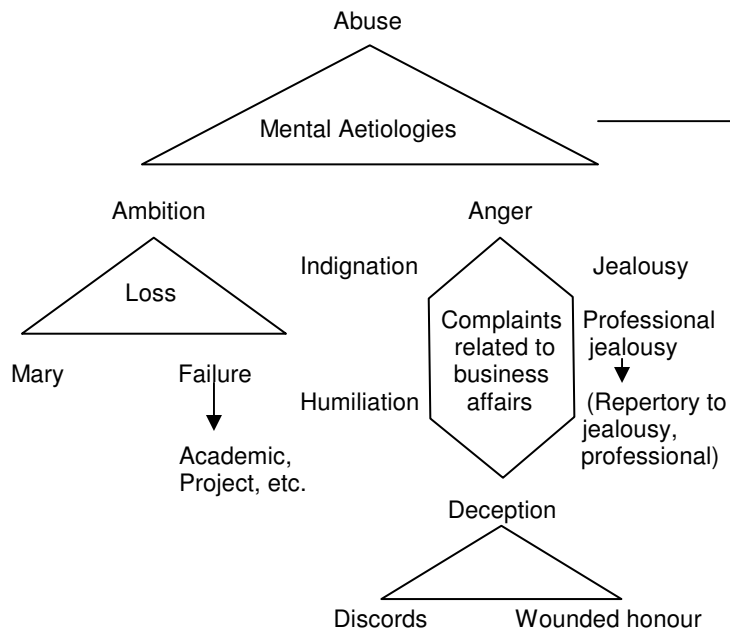
Physical Clinicals:

1. Acute & Chronic Gastritis;
2. Acute & Chronic Gastro-enteritis (diarrhoea);
3. Acute & Chronic Biliary disorders;
4. Headaches;
5. Osteo-arthritis and Backache;
6. Sleeping Disorders.

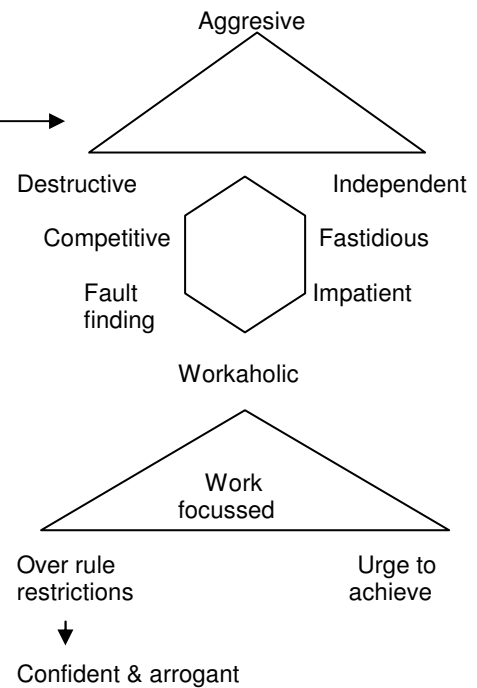
B. MENTAL ESSENCE



MENTAL AETIOLOGIES



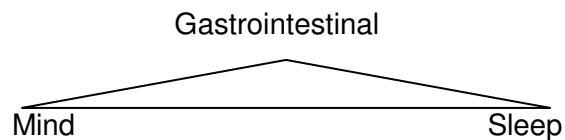
PSYCHIC MANIFESTATIONS



Mental Clinicals:

1. Obsessive Compulsive Disorders (O.C.D);
2. Angry episodes; Destructive.
3. Anxiety Neurosis;
4. Workaholic.

C. SPHERE OF ACTION: WEAKEST LINKS



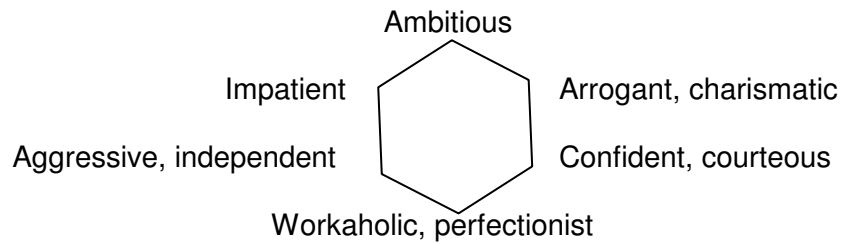
D. CATCH WORDS: KEYNOTES

Absence of desire for defecation is a contraindication

Heaviness in abdomen,
hours after food: only
better by vomiting

Sedentary life, sex,
stimulating experiences &
food, coffee, wine in excess

E. KEYWORDS FOR PERSONALITY PROFILE



F. POTENCY OF CHOICE

- i) Gastric : 200C.
- ii) Diarrhoea and constipation : 1M.
- iii) Mental : 1M.
- iv) Sexual : 1M.
- v) Back : 1M.
- vi) Bad effects of drugging : 200C → 1M.

Acute as well as Chronic medicine.

G. MIASMATICS OF NUX VOMICA

Psora +++, Sycosis ++, Syphilis +, Tubercular ++.

H. CLINICAL TIPS

Career orientated irritable, impatient, workaholic men suffering from indigestion and heaviness of abdomen with frequent ineffectual urging for evacuation.

{ [HYPERLINK "http://www.homoeopathy-course.com/SWF_/NUX_VOMICA.html"](http://www.homoeopathy-course.com/SWF_/NUX_VOMICA.html) }
(Click above link for Picturised Presentation)