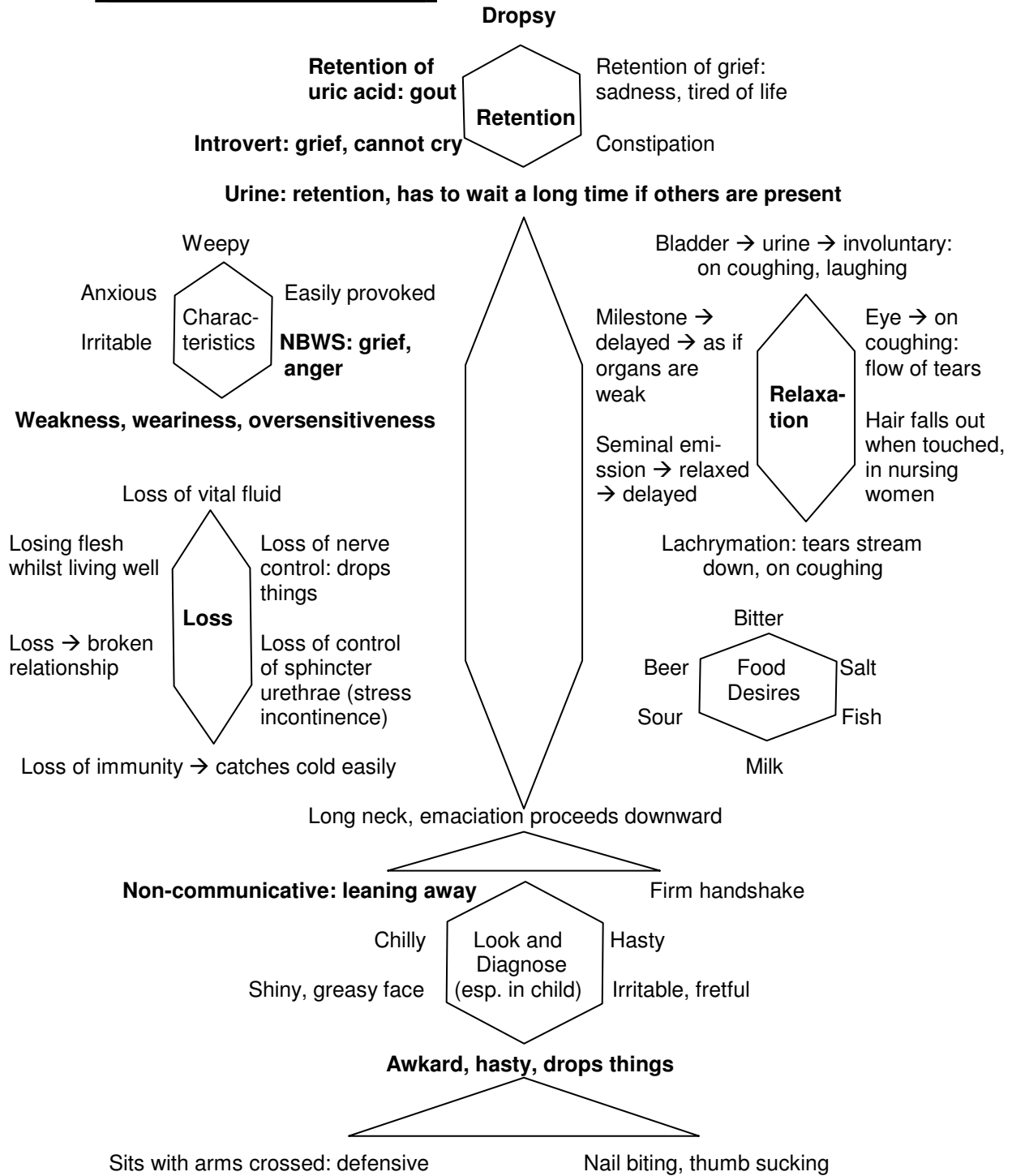




{ HYPERLINK "http://www.homoeopathy-course.com/SWF_/NATRUM_MURIATICUM.html" }
 (Click above link for Picturised Presentation)

NATRUM MURIATICUM

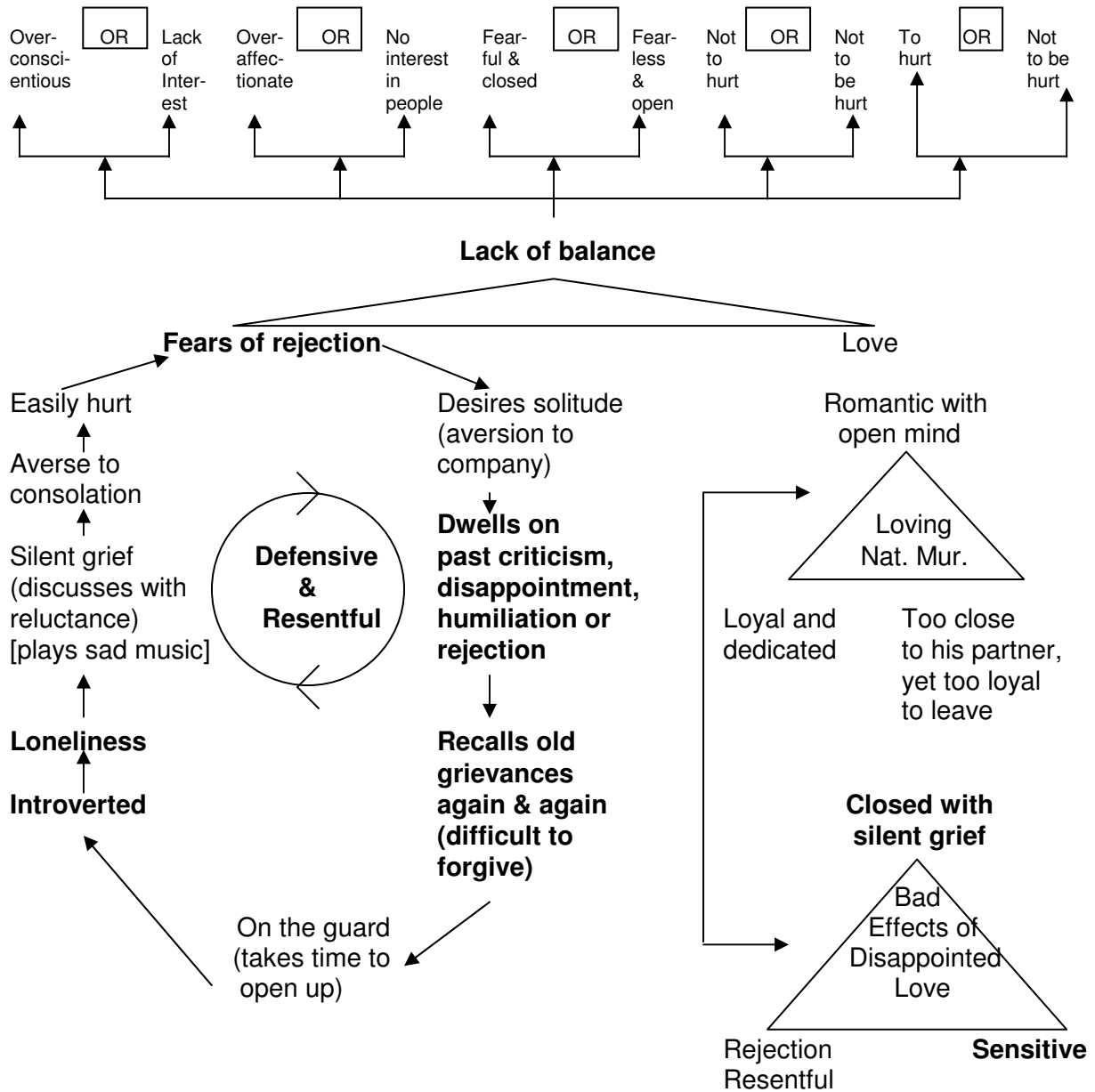
A. PHYSICAL THEME



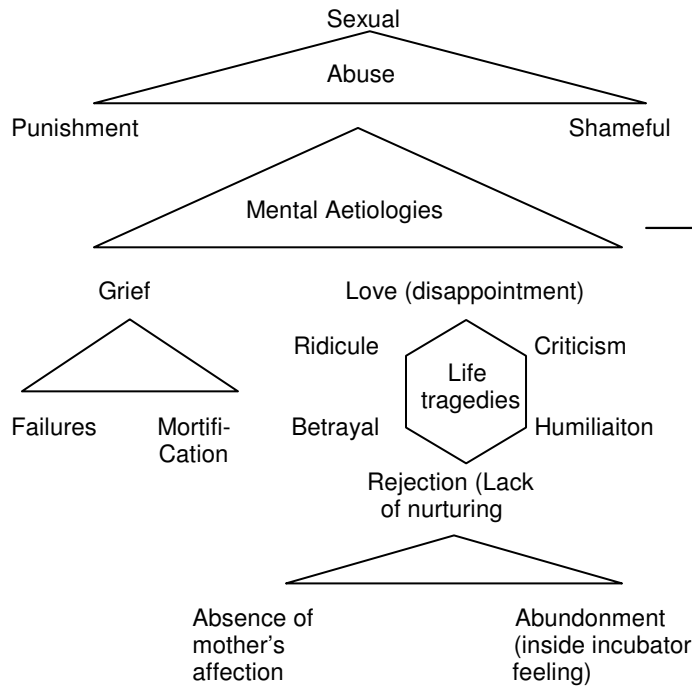
Physical Clinicals:

1. Chronic Migraine;
2. Oedema & Dropsy;
3. Urinary Disorders including Dysuria; Anuria; Stress Incontinence;
4. Neuological weakness, Tremor;
5. Post mature ejaculation;
6. Hay-fever;
7. Chronic Gastritis.

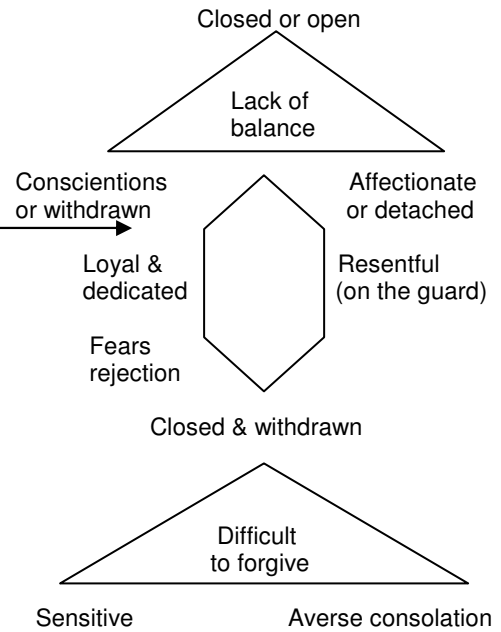
B. MENTAL ESSENCE



MENTAL AETIOLOGIES



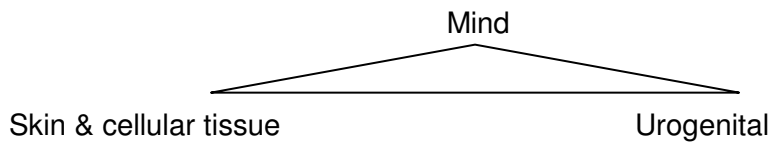
PSYCHIC MANIFESTATIONS



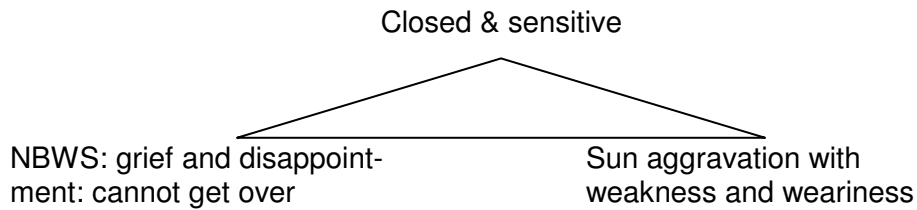
Mental Clinicals:

1. Depression;
2. Anxiety Neurosis;
3. PMT (Pre-Menstrual Tension);
4. Anger episodes.

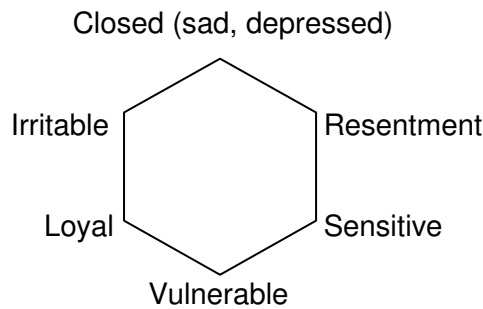
C. SPHERE OF ACTION: WEAKEST LINKS



D. CATCH WORDS: KEYNOTES



E. **KEYWORDS FOR PERSONALITY PROFILE**



F. **POTENCY OF CHOICE**

- i) Headache : 200 C.
- ii) Respiratory : 200 C.
- iii) Heart : 1 M.
- iv) Urinary : 1 M.
- v) Skin : 200 C.
- vi) Fever : 200 C.
- vii) Female : 1 M.
- viii) Mentals : 1 M, 10 M.

Chronic medicine.

(* Do not use for acute conditions, it complicates the case)

G. **MIASMATICS OF NATRUM MURIATICUM**

Psora +++, Sycosis +++, Syphilis ++, Tubercular ++

PREPARATIONS OF NATRUMS :- (1) NAT. ARS. :- Emaciation and oedema of Ars. + restlessness of Ars. + chilliness of Ars. + burning stomach of Ars. : great use in coryza, diphtheria & pityriasis. (2) NAT. CARB. :- Chapped hands and face, rough dry skin, scrofulous, alimentary irritation, profound depression, < physical or mental exertion = debility → depression, with indigestion and sterility. (3) NAT. IOD. :- Palpitation of Iodum + chronic laryngitis and pharyngitis of Iodum of tubercular taint in Natrum constitution. (4) NAT. NIT. :- All kinds of acute inflammation or acute exacerbation viz. acute laryngo – tracheitis, acute pneumonia, acute rheumatism etc. Nat. M. constitutions. (5) NAT. PHOS. :- Disease caused by excesses of lactic acid, therefore serves well in the diseases of infants, who having been fed to excess with milk and sugar = suffer from redundant acids. (6) NAT. SALICYCLICUM :- Meniere's disease : giddiness < on rising with tinnitus and deafness. (7) NAT. SILICOFLUORICUM :- Bone scraper in caries.

H. **CLINICAL TIPS**

Retention: physical and emotional is my understanding of this wonderfully deep acting medicine.

{ **HYPERLINK** "http://www.homoeopathy-course.com/SWF_/NATRUM_MURIATICUM.html" }
(Click above link for Picturised Presentation)